

## Schedule of Rates

Please complete your request or application online at [www.marlboroughlines.co.nz](http://www.marlboroughlines.co.nz)

<b>Working Near our Network</b>	<b>Zone 1.</b>	<b>Zone 2.</b>	<b>Zone 3.</b>	<b>Zone 4.</b>
Close Approach Authority Permit	No Charge			POA
Safety Disconnect Service Fuse Only (homeowner) <sup>1a</sup>	No charge			POA
Safety Disconnect Service Fuse Only <sup>1b</sup> (electrical contractor)	\$245	\$400	\$540	POA
Safety Disconnect with Temporary Removal of Lines <sup>2</sup>	POA			
Cable Location <sup>3</sup>	\$198	\$268	\$334	POA
<b>Connect or Alter my Supply</b>				
Supply Enquiries <sup>4</sup>	\$250			
Simple Network Fuse Upgrade or Downgrade <sup>5</sup>	\$141	\$219	\$289	POA
CoV, Record of Assessment, Periodic Inspection <sup>6</sup>	\$281	\$369	\$444	POA
Connection Liveness Inspection including issuance of ROI <sup>7</sup>	\$294	\$381	\$456	POA
Decommission – Meter Removal Only <sup>7</sup>	\$231	\$319	\$394	POA
Decommission with Removal of Lines <sup>7</sup>	POA			
Connection / Alteration Application Fee Only	\$250			
<b>Connect Distributed Generation</b>				
Distributed Generation Application Fees <sup>8</sup>	Part 6 of Code			
<b>Other</b>				
Customer Installation Faults <sup>9</sup>	\$141	\$219	\$289	Time + kms
Decommission with Removal of Lines	POA			
Service Crew Charges (e.g., physical connecting to network)	POA			
Traffic Management	POA			
High Load	POA			

- The disconnection point must be a low voltage connection, and serve a single property only, the person requesting the disconnection must be on site at the time of disconnection. Allows for same day reconnection unless otherwise agreed.
  - A safety disconnection (isolation) for a homeowner is to allow a home owner to safely undertake work on their home including painting, water blasting, vegetation trimming and/or any other home maintenance work where the worker may be near the overhead service line/mains entry point.
  - A safety disconnection to de-energise supply to the premises to allow electrical work to be undertaken is chargeable.
- High voltage (HV) disconnections, low voltage (LV) disconnections affecting multiple parties, or LV disconnections that require the temporary removal of a service line require 20 working days notification. An alternative date must be requested at least 10 working days after the initial date. These require MLL to prepare a cost estimate based on time, mileage and materials.
- A cable location allows for up to one-hour onsite, and up to 100m of cable locating. Any added time onsite will be charged.
- Supply enquiry fee may be waived if connection isn't permissible. Costs cover MLL's assessment of enquiry, and what *might* be required in order to facilitate connection. To be clear, a connection application is required if a design and quote is sought.
- Simple fuse upgrade / downgrade only, i.e., 60Amp to 30Amp or vice-versa. Any other fuse upgrade to be treated as change to connection (capacity upgrade) application. Includes disconnection and reconnection.
- For domestic/residential connections only. Commercial premises will be charged on a time and mileage basis.
- A \$250 application fee is applicable in addition to the costs indicated.
- Application fees for Distributed Generation are prescribed in Schedule 6.5 of the Electricity Industry Participation Code 2010.
- If MLL is called out for a part or no power, and the fault is on the customer installation (not a network fault), the customer will be liable for costs incurred.

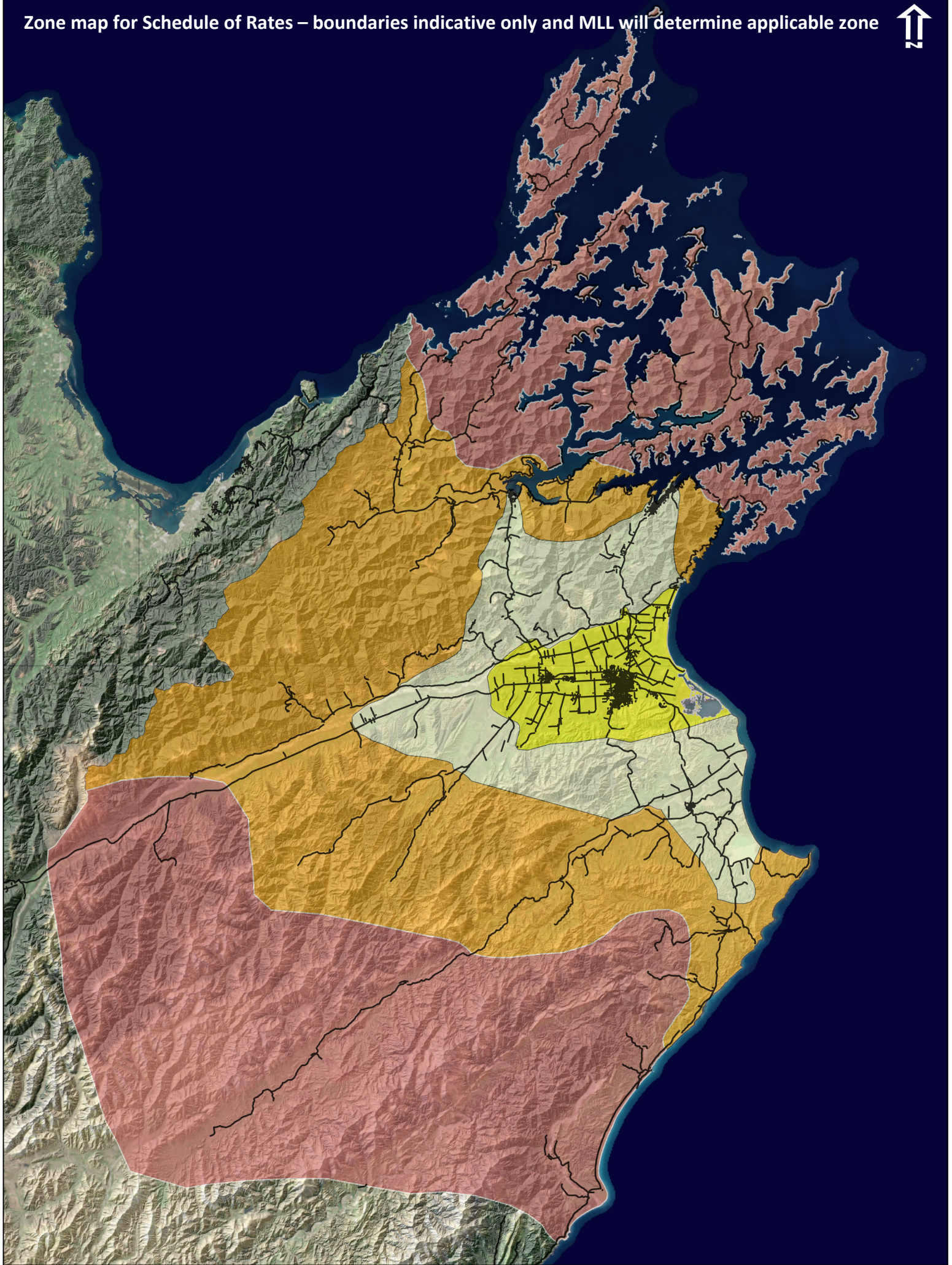
If the site is not ready for MLL to undertake the work requested, MLL reserves the right to invoice for actual costs incurred.

Unless noted otherwise, all works require a minimum of **three working days** notice and are subject to resource availability. MLL reserves the right to cancel and reschedule planned work due to weather events and/or network fault work taking priority. Work agreed to by MLL outside of normal business hours (Mon-Fri 7.30am-4pm) will incur additional costs.

Works required within three days of application will incur an **additional fee of \$200 + GST**. If the work is to be done as an emergency event (e.g., fire) MLL may waive any fees.

All prices are exclusive of GST and are effective from **1 July 2023**.

Zone map for Schedule of Rates – boundaries indicative only and MLL will determine applicable zone



0 5 10 15  
KM

### MLL Pricing Zones for Field Services

*This map is to supplement the MLL field services schedule of rates*

Legend:

- Zone 1
- Zone 2
- Zone 3
- Zone 4
- Road